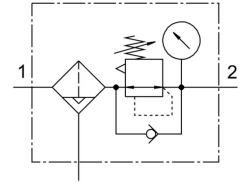


# Filter regulator MS9-LFR-NG-D6-EUV-DI-AG-PSI-AS

Part number: 564125

FESTO



## Data sheet

| Feature                          | Value  |
|----------------------------------|--|
| Size                             | 9  |
| Type code                        | MS9-LFR  |
| Series                           | MS   |
| Actuator lock                    | can be closed with accessories   |
| Mounting position                | Vertical +/- 5°  |
| Grade of filtration              | 40 µm  |
| Condensate drain                 | Fully automatic  |
| Structural design                | Directly controlled compressed air filter diaphragm regulator  |
| Max. condensate volume           | 220 ml   |
| Controller function              | Outlet pressure constant<br>With primary pressure compensation<br>With secondary exhausting<br>With return flow function |
| Symbol                           | 00991587   |
| Pressure gauge                   | with pressure gauge  |
| Operating pressure               | 2 bar ... 12 bar   |
| Pressure regulation range        | 0.5 bar ... 7 bar  |
| Max. pressure hysteresis         | 0.4 bar  |
| Operating medium                 | Compressed air as per ISO 8573-1:2010 [7:4:-]<br>Inert gas   |
| Corrosion resistance class (CRC) | 2 - Moderate corrosion stress  |
| Storage temperature              | 5 °C ... 60 °C   |
| Air quality class at the output  | Compressed air as per ISO 8573-1:2010 [7:4:4]  |
| Temperature of medium            | 5 °C ... 60 °C   |
| Ambient temperature              | 5 °C ... 60 °C   |
| Product weight                   | 2400 g   |
| Type of mounting                 | Optionally:<br>Line installation<br>With accessories   |
| Covering material                | PA-reinforced  |
| Material of spin disc            | POM  |
| Material of filter support       | POM  |
| Note on materials                | RoHS-compliant   |
| Material of sub-base             | Die-cast aluminum  |
| Material of mounting bracket     | Die-cast aluminum  |
| Compressed air filter material   | PE   |
| Housing material                 | Die-cast aluminum  |

| <b>Feature</b>             | <b>Value</b>                         |
|----------------------------|--------------------------------------|
| Module connector material  | Die-cast aluminum                    |
| Diaphragm material         | NBR                                  |
| Material of bowl           | Wrought aluminum alloy               |
| Shell sealing material     | NBR                                  |
| Inspection window material | PA                                   |
| Separating disc material   | POM                                  |
| Valve tappet material      | Wrought aluminum alloy<br>NBR<br>POM |